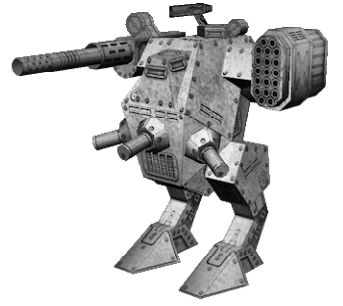




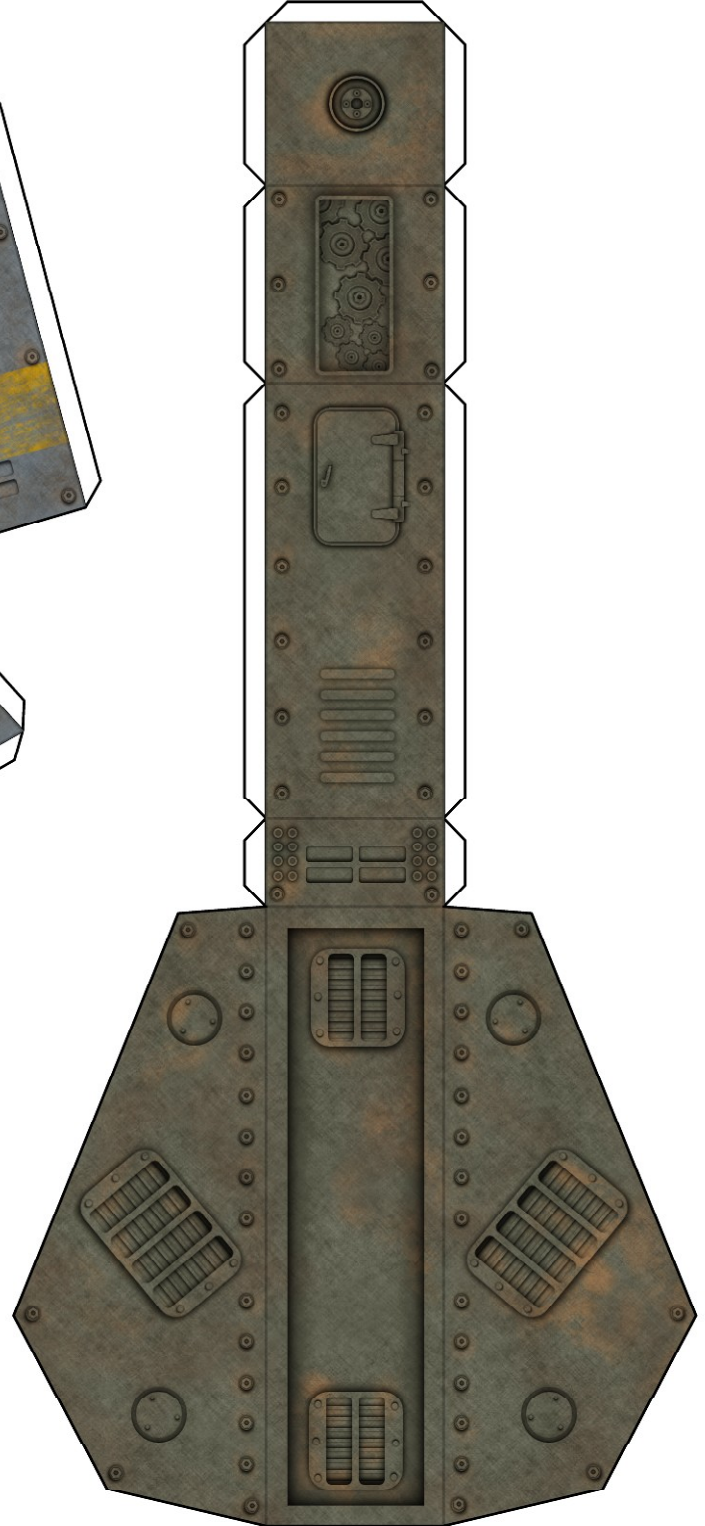
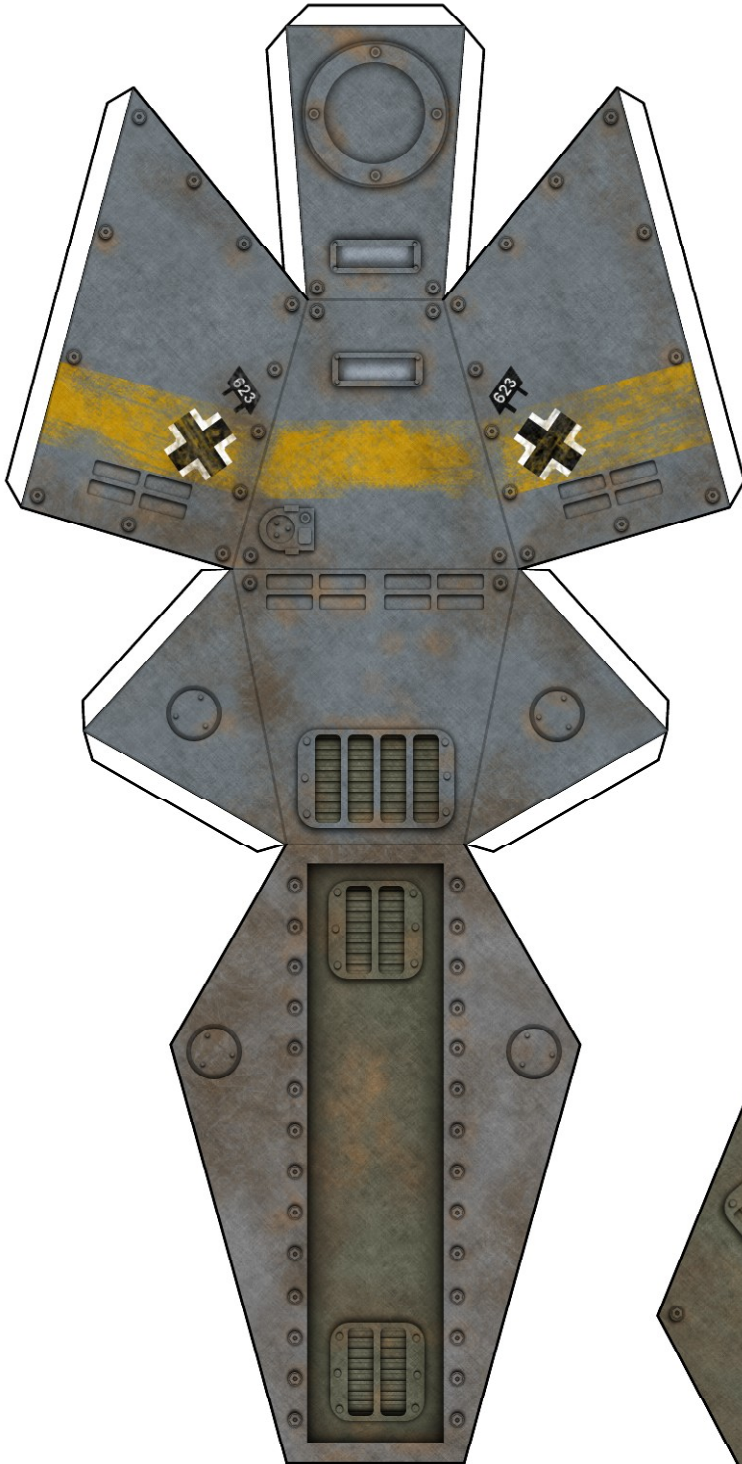
SteamPunk  
*PulpTech*  
WEIRD WAR II

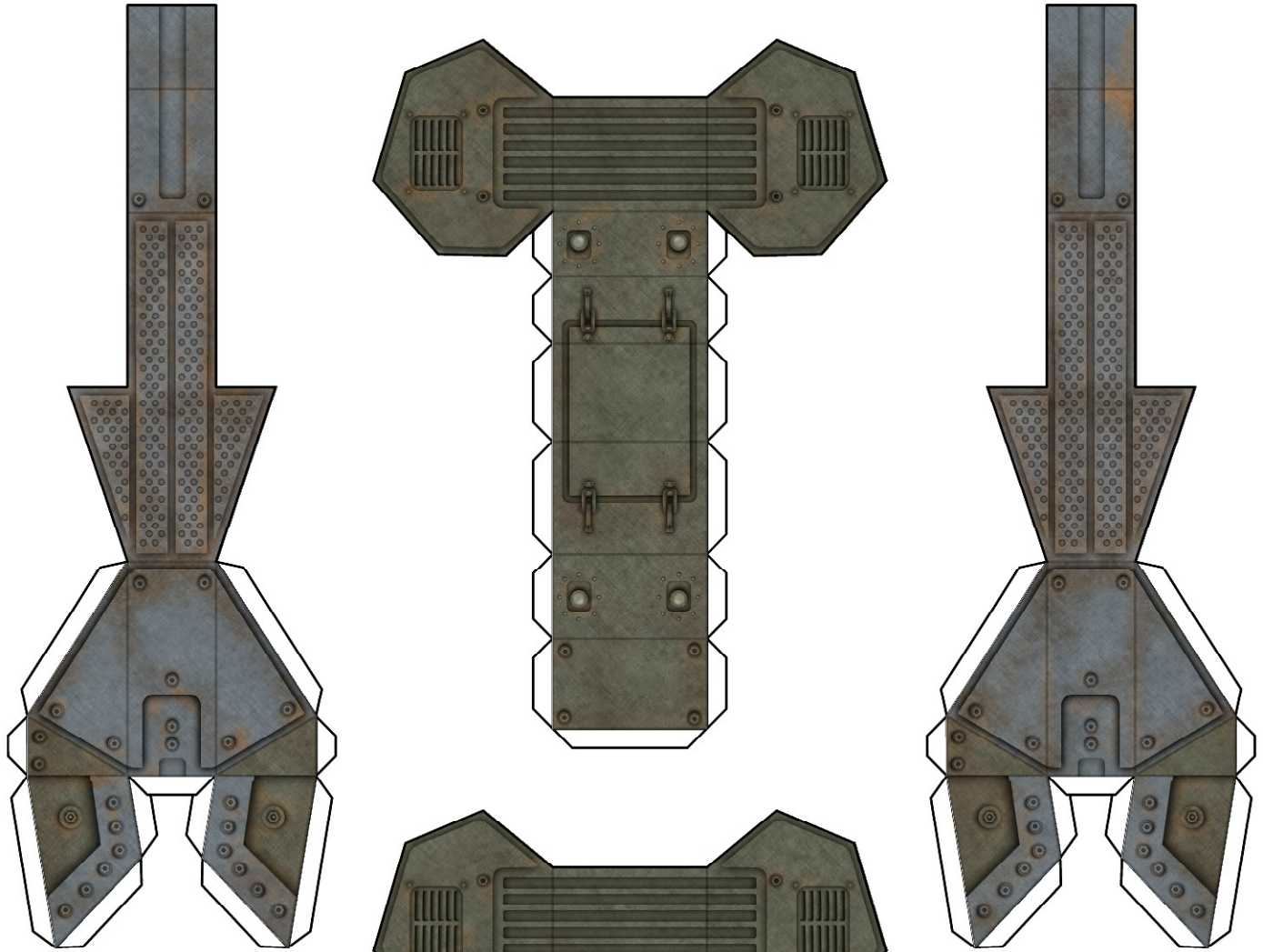
# MECHA



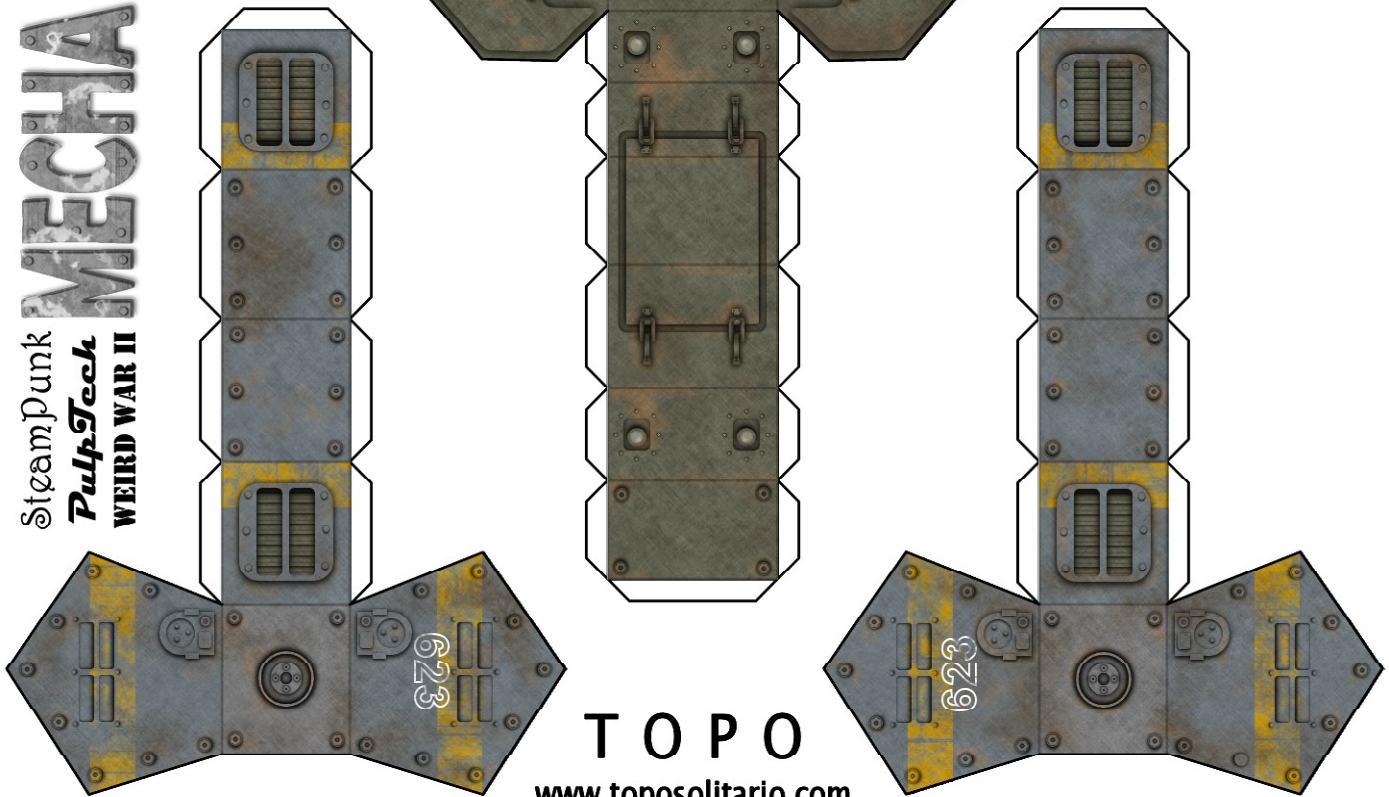
## TOPO

[www.toposolitario.com](http://www.toposolitario.com)



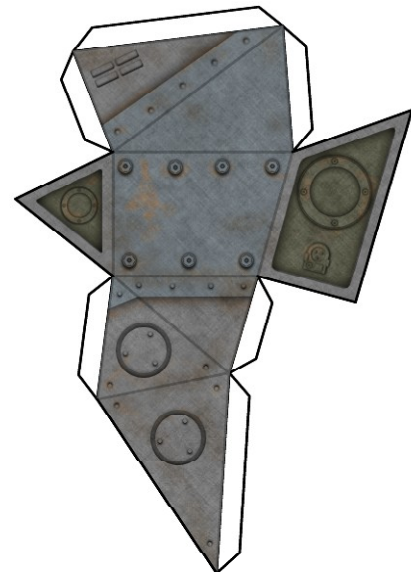
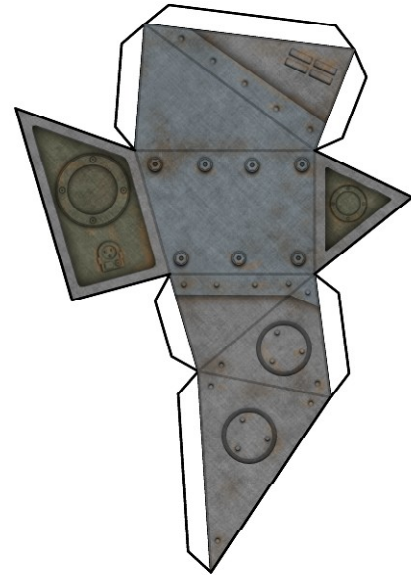
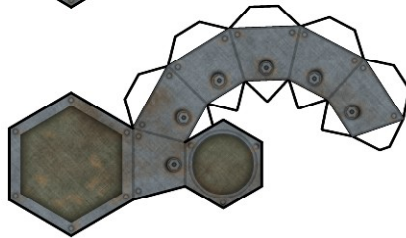
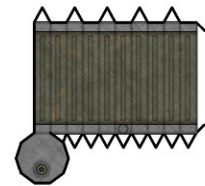
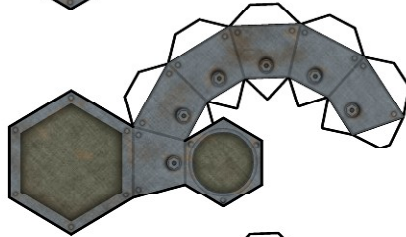
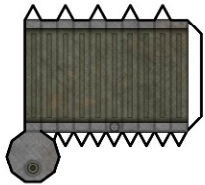
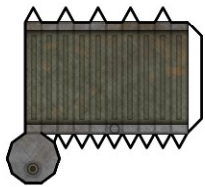
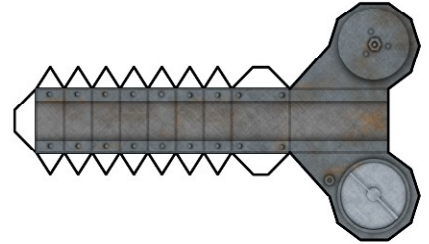
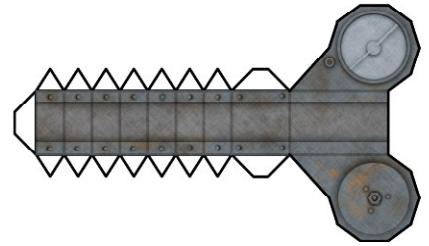
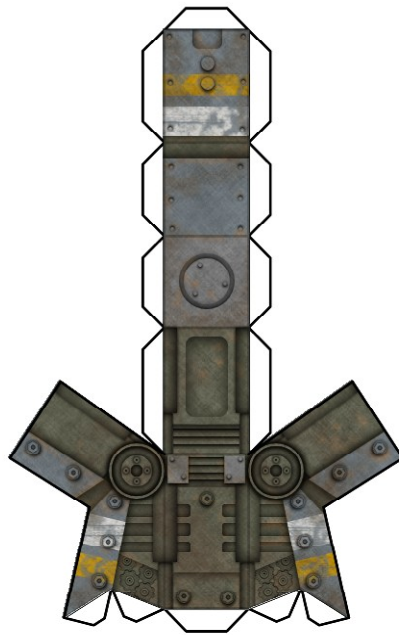
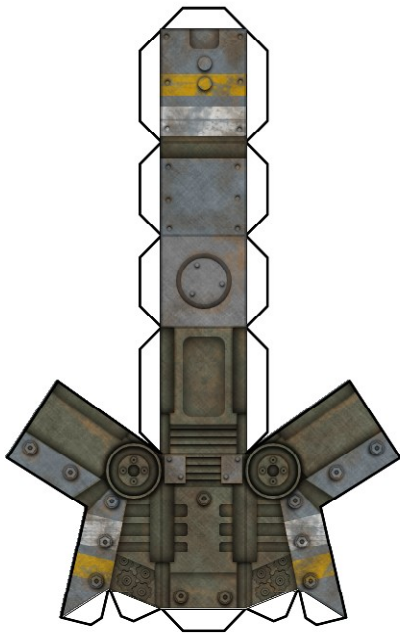


SteamPunk  
**PulpTech**  
WEIRD WAR II



TOPO

[www.toposolitario.com](http://www.toposolitario.com)

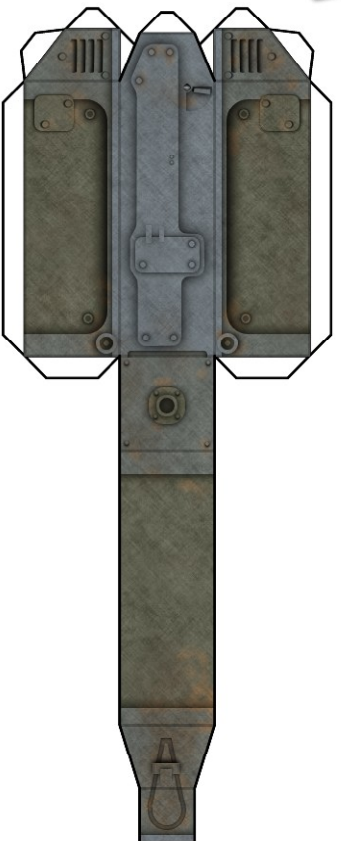
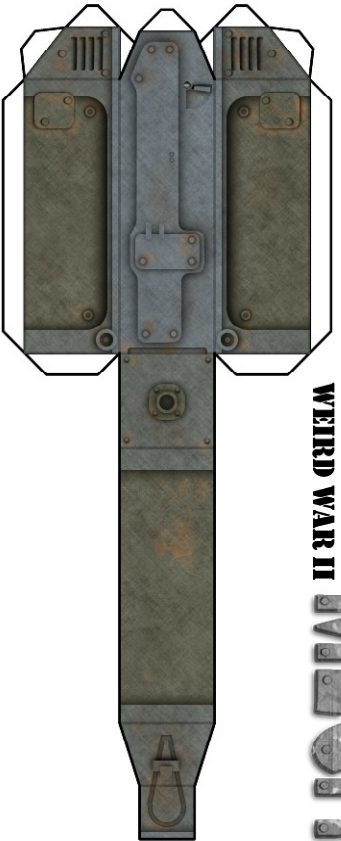


SteamPunk  
*PulpTech* **MECHA**  
WEIRD WAR II

TOP O

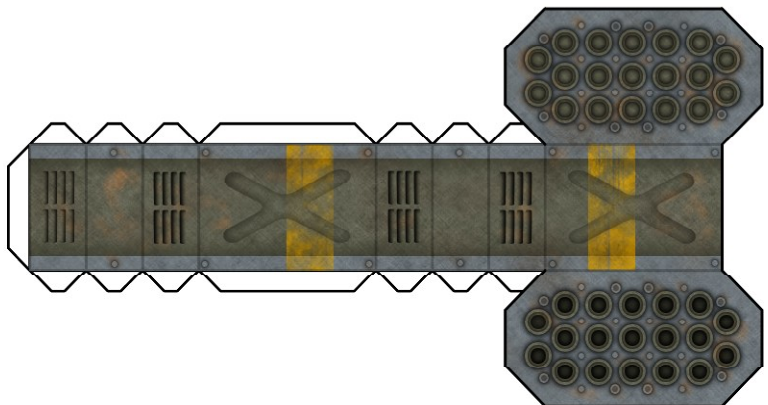
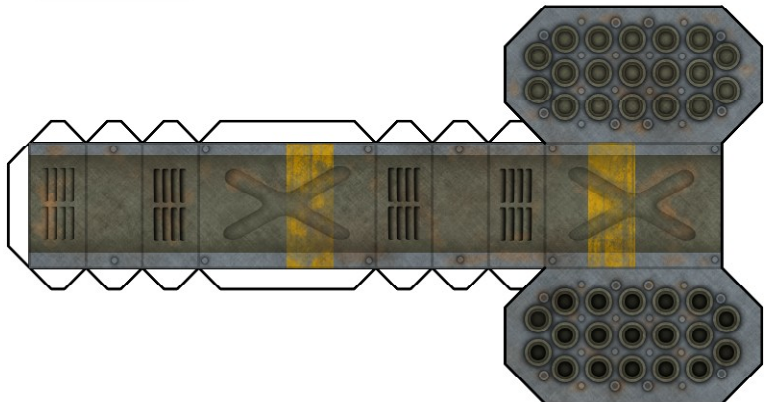
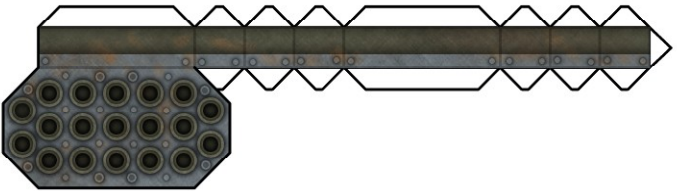
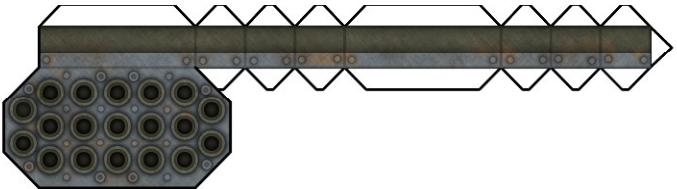
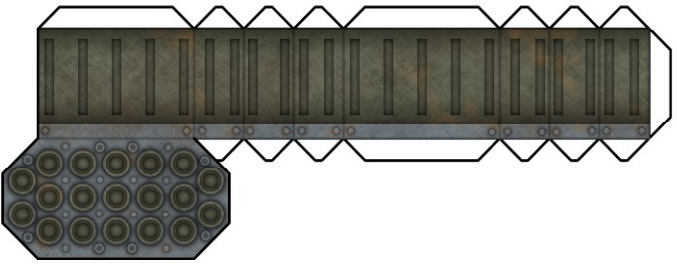
[www.toposolitario.com](http://www.toposolitario.com)

SteamPunk  
*PulpSteak*  
WEIRD WAR II  
**MECHA**

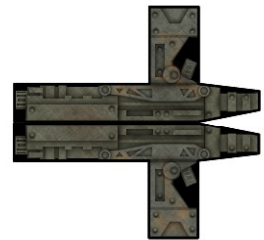
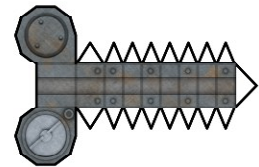
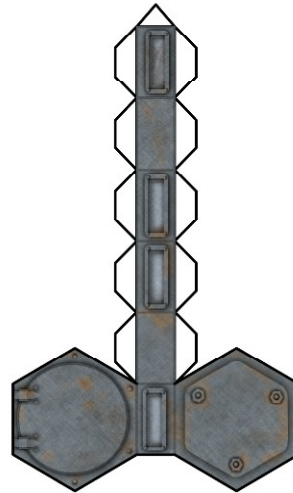
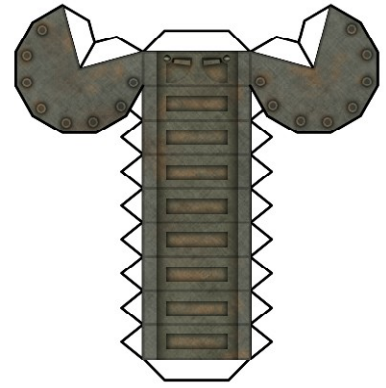
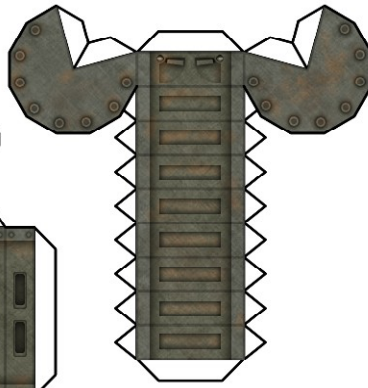
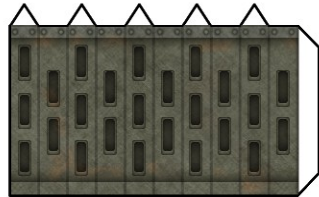
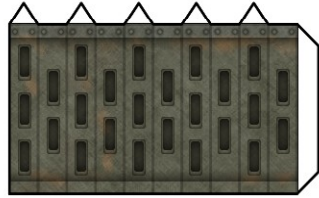
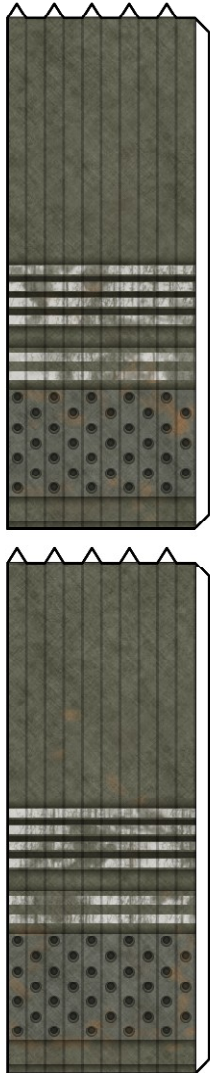


**T O P O**

[www.toposoltario.com](http://www.toposoltario.com)



TOPO  
www.toposolitario.com



SteamPunk  
*PulpTech* MECHA  
WEIRD WAR II

Build them any way you wish. You can glue any piece anywhere so many models can be done. Just have a look at all this sample builds here!

Constrúyelo de la manera que gustes. Puedes pegar cualquier pieza en cualquier sitio, por tanto hay cientos de posibles variedades. ¡Echa un ojo a estos ejemplos!

